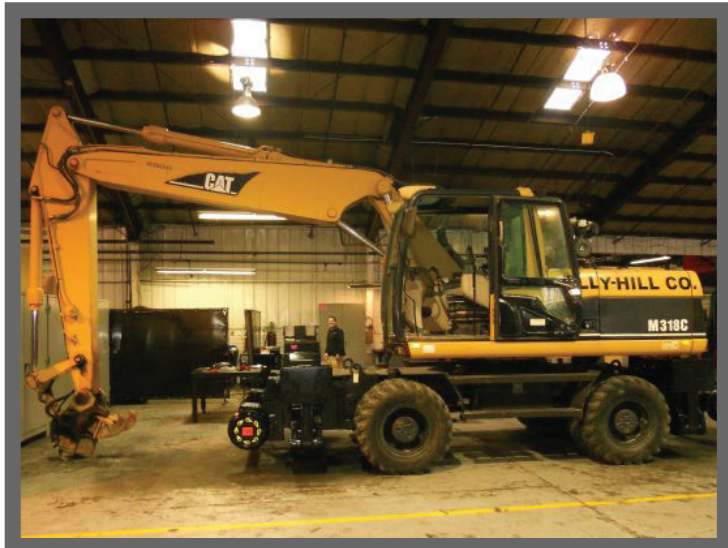


RW-1650G



Capacity

- 70,000 lbs per railgear axle at 20 mph.
- Front axle is rated at 70,000 lbs.
- Rear axle is rated at 70,000 lbs.

Gauge

- 56-1/2 inch standard. Optional alternative gauge widths available.

Front Gear

- RW1650 single axle with two 16 inch wheels
- Attached to front blade attachment or bulkhead design attached to front outrigger frame
- 10 inch ground clearance in highway mode.
- 2 inch tire clearance above the top of the rail in rail position.
- Mechanical safety pin-offs in highway mode.

Rear Gear

- RW1650 single axle with two 16 inch wheels.
- Bulkhead design attached to the rear outrigger frame.
- 10 inch ground clearance in highway mode.
- Mechanical pin-offs in both rail and highway modes.

Brakes

- External Cobra brakes.

Supported Equipment

CAT M314/M315/M316/M317/M318/M320 • DOOSAN DX190W-5/DX210WMH-5
 GRADALL 3300XL/4300XL • GROVE GCD25 • HITACHI 190W • JOHN DEERE 180C/190D/210C
 LIEBHERR A918/A920 • VOLVO EW106E/EW170/EW180/EW220E

Contact DMF for alternate chassis consideration

**Check with DMF prior to equipment selection.*



Family Owned since 1972
 Made in the USA

People You Know

Quality You Trust

Service You Value

MODEL RW-1650G

FEATURES

RW-1650G are railgear applications designed to take the punishment of heavy-duty excavation work. The 16 inch diameter forged steel guide wheels store below the frame in the highway position avoiding interference with other vehicle functions. The railgear mounts via blade replacement connection or mounting on the outriggers via bulkhead application.



Innovate



Manufacture



On Time Delivery



Support



People You Know, Quality You Trust, Service You Value

Our team has over 300 years of experience bringing innovation, maintenance and training to keep our clients on track.

665 Pylant Street NE, Atlanta, GA 30306 | PH 404.875.1512 | FX 404.875.4835
E-mail sales@dmfatlanta.com | www.dmfatlanta.com